

# **PUDU CC1 Operation Guide V6.0**

**Document Version: V6.0**

**Model: CCBC01/CCBC01N**

**Shenzhen Pudu Technology Co., Ltd.**

Copyright © Shenzhen Pudu Technology Co., Ltd. 2026. All rights reserved.

No part or all of the content of this operation manual may be reproduced, copied, transcribed, or translated in any form (electronic, photocopying, recording, etc.) for any purpose without the explicit written permission of Shenzhen Pudu Technology Co., Ltd., nor may it be disseminated for commercial purposes. The product specifications and information mentioned in this operation manual are for reference only; if the content is updated, no separate notice will be given. Unless otherwise specified, this operation manual serves only as a usage guide, and no statements herein constitute any form of warranty.

## Purpose





This manual introduces how to use and maintain the PUDU CC1. It is applicable to users, sales personnel, technical support engineers, and installation/commissioning engineers.

## Revision History

Date	Revision History
2023/10/12	First Release
2023/11/27	After-sales Policy Revision
2024/04/10	Revision of Partial Specifications and Content
2026/03/13	Content Update

## Symbol Conventions

The following symbols may appear in this manual, and their meanings are as follows.

Symbol	Description
 Danger	Indicates a high potential hazard that, if not avoided, will result in death or serious injury.
 Warning	Indicates a moderate or low potential hazard that, if not avoided, could result in minor injury to personnel, damage to the robot, etc.
 Caution	Indicates a potential risk that, if these texts are ignored, could result in damage to the robot, data loss, or unpredictable results.
 Notes	Indicates additional information to the main text, emphasizing and supplementing the main text.

# Contents

<b>PURPOSE</b> .....	<b>2</b>
<b>REVISION HISTORY</b> .....	<b>2</b>
<b>SYMBOL CONVENTIONS</b> .....	<b>3</b>
<b>CONTENTS</b> .....	<b>4</b>
<b>1、 INTENDED USE</b> .....	<b>7</b>
2、 SAFETY INSTRUCTIONS.....	8
2.1 Power Supply Precautions.....	8
2.2 Usage Precautions.....	8
2.3 Environmental Precautions.....	9
3、 PRODUCT COMPONENTS.....	12
3.1 Packing List.....	12
3.2 Appearance and Parts .....	12
3.3 Performance Parameters.....	14
4、 PRODUCT USAGE .....	15
4.1 Basic Usage.....	15
4.1.1 Power On, Power Off.....	15
4.1.2 Start Cleaning Task.....	16
4.1.3 Pause Cleaning Task .....	16
4.1.4 Resume Cleaning Task.....	17
4.2 Handrail Usage.....	17
4.3 Work Modes .....	18
4.3.1 Automatic Cleaning.....	18

---

4.3.2 Scheduled Task .....	19
4.3.3 Manual Cleaning .....	19
4.4 Cleaning Modes .....	20
4.4.1 Scrubbing Mode .....	20
4.4.2 Sweeping Mode .....	22
4.5 Robot Renew Water .....	24
4.5.1 Manual Water Filling & Draining.....	24
4.5.2 Auto Water Filling & Draining .....	25
4.6 Robot Charging.....	26
4.7 Device Status.....	28
4.8 Settings.....	29
4.9 Common Functions.....	30
4.9.1 Cleaning Task Settings .....	30
4.9.2 Product Maintenance Settings.....	33
4.9.3 Product Interaction Settings.....	36
5、PRODUCT MAINTENANCE & TROUBLESHOOTING .....	40
5.1 Daily Cleaning .....	40
5.1.1 Cleaning Sensors and the Underside of the Robot.....	40
5.1.2 Cleaning Dust Bin, Water Filter Tank, Trash Container & Filter Sponge .....	40
5.1.3 Cleaning Side Brush & Sweeping/Scrubbing Roller Brushes .....	42
5.1.4 Cleaning or Replacing Mop Cloth & Squeegee .....	43
5.1.5 Cleaning the Dirty Water Tank.....	44
5.1.6 Cleaning the Roller Brush Chamber .....	45
5.1.7 Cleaning the Pollution Pipe .....	46
5.1.8 Cleaning charging plates.....	46
5.1.9 Clean the water tank filter .....	47



5.2 Consumable Replacement .....	48
5.3 Troubleshooting .....	49
AFTER-SALES POLICY.....	50

# 1、Intended Use



The PUDU CC1 cleaning robot is a multi-functional cleaning robot positioned for small and medium-sized scenarios. It integrates sweeping, scrubbing, (carpet) vacuuming, and dust mopping into one unit, supporting autonomous water refilling and drainage, autonomous charging, and autonomous maintenance. It is suitable for public areas such as office buildings, commercial buildings, and residential common areas. It can clean various floor types, including terrazzo, marble, floor tiles, epoxy resin, sandstone, artificial stone, and short-pile hard carpets.

The product's core advantage lies in its ability to meet the diverse cleaning needs of various hard floors and short-pile hard carpets, allowing customers to use one machine for multiple purposes. Its primary target scenarios include light-soil indoor environments such as retail malls, office buildings, commercial buildings, and apartment hotels. While reducing costs and increasing efficiency for customers, it also enhances the overall cleanliness and quality of the environment.

## 2、 Safety Instructions

### 2.1 Power Supply Precautions

- It is strictly forbidden to use non-original chargers to charge the robot. If the charger is found to be damaged, please replace it immediately.
- For the first use, please fully charge the battery to 100%.
- To ensure the efficiency and battery life of the robot, please keep the battery level above 10% at all times.
- When the battery is below 10%, the robot is in a low battery state and needs to be charged as soon as possible.
- When the battery is below 2%, it enters battery protection mode; the robot will not be able to perform tasks and must be charged before use.
- If the machine will not be used for a long period, please turn the power key switch to the "OFF" position.
- If the robot is to be used after being idle for a long time, please fully charge it before use.

### 2.2 Usage Precautions

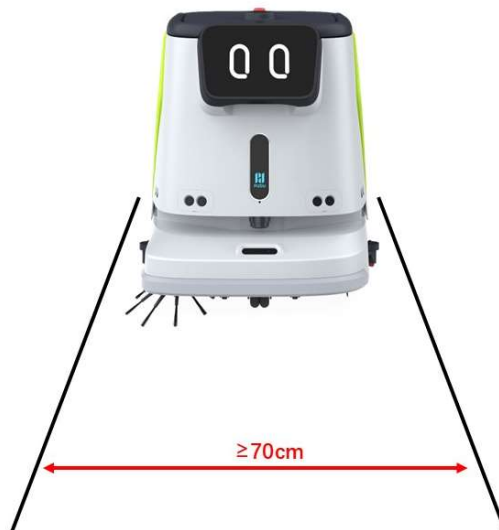
- This product is a wheeled autonomous cleaning robot and is limited to indoor flat environments; do not use it in outdoor environments (such as open balconies) or on rugged ground (such as stairs).
- Do not use the robot in environments above 40°C or below 0°C.
- If the robot accidentally enters an incorrect position due to factors such as obstruction, please pause the task immediately and push it back to the correct route before resuming.
- Do not pull or drag the robot while it is running; if you need to push or carry the robot, please click the screen to pause it first.
- Do not push the robot in reverse while it is powered on.

- Do not block the robot's sensors, as this may lead to abnormal movement or loss of positioning.
- Do not hit the device or apply excessive force to the screen, as this may cause damage.
- Do not place loads on the robot, do not place open-flame stoves, and do not carry any flammable solids, gases, or liquids.
- Temporary settings and adjustments are prohibited while the robot is in motion; all operations should be performed after clicking the screen to pause the robot.
- Do not perform cleaning or maintenance work while the machine is powered on and running.
- Before use, please clear all cables and wires from the floor to avoid dragging them during operation.
- To ensure safety, please make sure the robot operates at a speed of 1.2 m/s or below.
- Recognition blind spots exist in the robot's automatic obstacle avoidance system; it is strictly forbidden to suddenly block the robot while it is traveling at high speeds, as this may cause safety accidents.
- When transporting the robot, ensure both the clean water tank and the dirty water tank are emptied; do not tilt or flip the machine during transport, as this may damage the body.
- The robot can use non-foaming, neutral detergents with a pH value of 6–8 (defoamers may be added); the use of strong acids, strong alkalis, or detergents containing active agents is prohibited.

## 2.3 Environmental Precautions

- Do not use or charge the robot in hazardous environments such as high-temperature, high-pressure, flammable, or explosive areas to avoid personal injury or equipment damage.
- Do not dispose of the robot or its accessories as general household waste. Please comply with local laws regarding the disposal of this robot and its accessories and support recycling initiatives.
- This robot is suitable for flat ground; it is not suitable for environments with steps, excessive slopes, or overly cramped spaces.
- It is not recommended to use the robot on surfaces with heavy oil stains.

- Power cords and other debris scattered on the floor may trip or entangle the robot; please remove them before use.
- When using this product in areas with floor protrusions (such as door sills or floor sockets), ensure the height of the protrusions is within 8mm (during cleaning operations) or within 20mm (non-cleaning, passage only).
- The passage width for the robot should be greater than 70cm; for long corridors, a width greater than 75cm is recommended for optimal fluidity.
- The robot's maximum climbing angle is 8° (in non-cleaning mode). To prevent risks associated with the robot sliding or rolling back, avoid pausing the robot while it is climbing a slope.
- The robot only supports cleaning on flat ground (in cleaning mode); do not use the robot for cleaning operations on visible slopes (greater than 3°).
- Guardrails or other protective barriers must be added at stair edges, downhill entrances, or any locations where there is a risk of the robot falling.



Passage Width Illustration

Ground Conditions	Illustration
-------------------	--------------

The robot is designed with a maximum climbing angle of 8° (in non-cleaning mode). To prevent potential risks of sliding or rolling back, avoid pausing the machine while it is climbing a slope.



The robot only supports cleaning on flat ground (in cleaning mode). Do not use the robot for cleaning operations on visible slopes (greater than 3°).



Surfaces between 14–22cm from the ground that are pure black (e.g., baseboards), mirrored (e.g., glass walls), or fully transparent on all sides may interfere with the robot's LiDAR reflections, causing abnormal movement. These scenarios require evaluation by technical support personnel, and site modifications (such as applying stickers) may be necessary to ensure proper laser reflection.

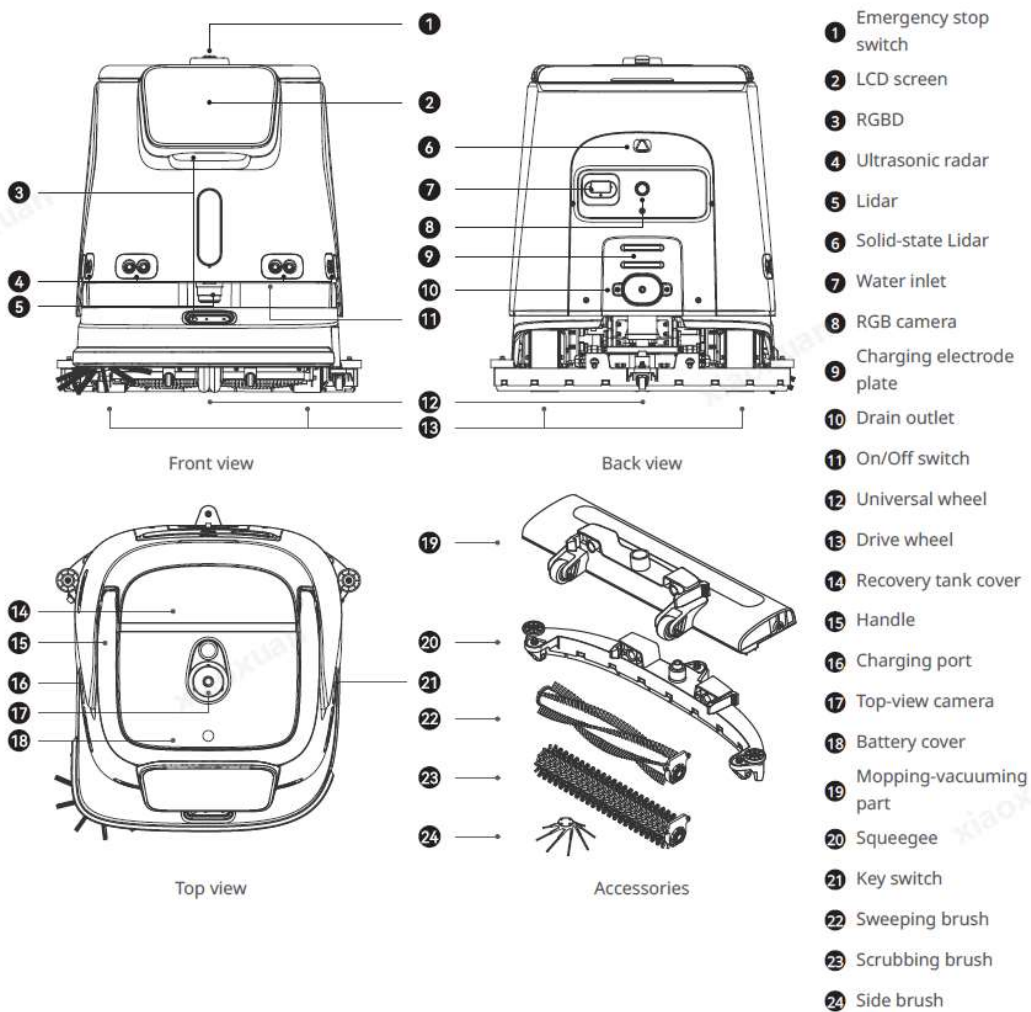


### 3、Product Components

#### 3.1 Packing List

Main Unit x1, Charger x1, Power Key x2, Side Brush x1, Squeegee x1, Dust Mop Rake x1, Scrubbing Roller Brush x2, Sweeping Roller Brush x2, Water Inlet Hose x1, Cleaning Water Gun x1, "PUDU CC1 User Manual" x1, Certificate of Conformity x1, Positioning Code x1

#### 3.2 Appearance and Parts



**Rear Cleaning Components:**



### 3.3 Performance Parameters

Feature	Description	
Model	CCBC01N	
Operating voltage	DC 23 V ~ 29.2 V	
Battery type	Lithium iron phosphate battery	
Power adapter input	AC 100 V ~ 240 V, 50/60 Hz	
Power adapter output	Max. 29.2 V, 15 A	
Battery capacity	50 Ah	
Charging time	< 3 h	
Battery life	Scrubbing: 5 h; Sweeping+Vacuuming+Mopping: 5 h; Carpet Vacuuming: 4 h; Silent Mopping: 9 h	
Cleaning capabilities	Sweeping, (Carpet) Vacuuming, Mopping, Scrubbing	
Weight	75 kg	165.35 pounds
Robot dimensions	629 x 552 x 695 mm	24.76 x 21.73 x 27.36 inches
Enclosure material	PC+ABS	
Screen size	10.1-inch LCD screen	
Navigation method	Integrated lidar and visual SLAM positioning	
Cruise speed	0.2 - 1.2 m/s (0.66 - 3.94 ft/s) (adjustable)	
Working noise	< 70 dB	
Min. path clearance	70 cm	27.56 inches
Max. surmountable height	20 mm (0.79 inch)	
Max. climbing angle	8°	
Max. surmountable gap	35 mm (1.38 inches)	
Cleaning width (with side brush)	500 mm	19.69 inches
Cleaning efficiency	700-1000 m <sup>2</sup> /h	837.19-1195.99 yr <sup>2</sup> /h
Dustbin capacity (vacuuming)	2.5 L (Default) / 6 L (Expand)	0.66 gal (Default) / 1.59 gal (Expand)
Water tank capacity (scrubbing)	Solution tank: 15 L (3.96 gal)	
	Recovery tank: 15 L (3.96 gal)	
Operation system	Android	
Communication	4G, Wi-Fi, Bluetooth supported, Lora (optional)	
Mobile App	Supported	
Operation mode	Manual/Auto	
Auto charging & Auto adding/ draining water	Supported (in conjunction with docking station)	
Optional function	Docking station/Charing station	
Working environment (charging included)	Temperature: 1°C to 40°C (33.8°F to 104°F); RH: ≤ 85%	
Storage environment	Temperature: -20°C to 60°C (-4°F to 140°F); RH: ≤ 85%	
Working altitude	< 2000 m	< 6561.68 ft
Application scope	Terrazzo, marble, tiles, epoxy resin, sandstone, artificial stone, short-pile carpets, etc.	
IP rating	IPX4	

(\*The robot's battery life in various cleaning modes was tested under laboratory conditions, with the low gear setting, starting from 100% battery and continuing until it reached 10%.)

## 4、Product Usage

### 4.1 Basic Usage

#### 4.1.1 Power On, Power Off

Powering On:

Ensure the key switch is in the "ON" position, then press and hold the Power Button for approximately 0.5 seconds. The blue light strip at the bottom will light up, indicating a successful startup.

Steps: 【Turn on key switch】 → 【Long press power button for 0.5s】 → 【Bottom blue light strip turns on】



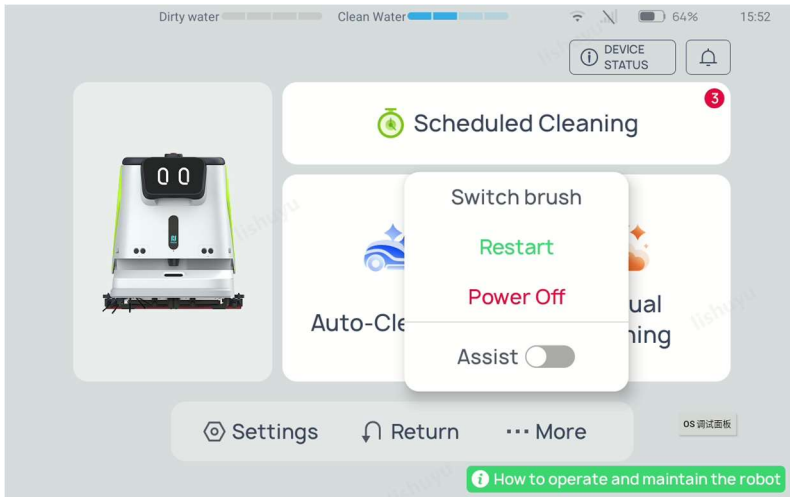
Powering Off:

Method 1: Press and hold the power button for approximately 6 seconds; the robot will automatically begin the shutdown process. The device is successfully powered off once the screen goes black.

Steps: 【Long press power button for 6s】 → 【Screen goes black/Power off】

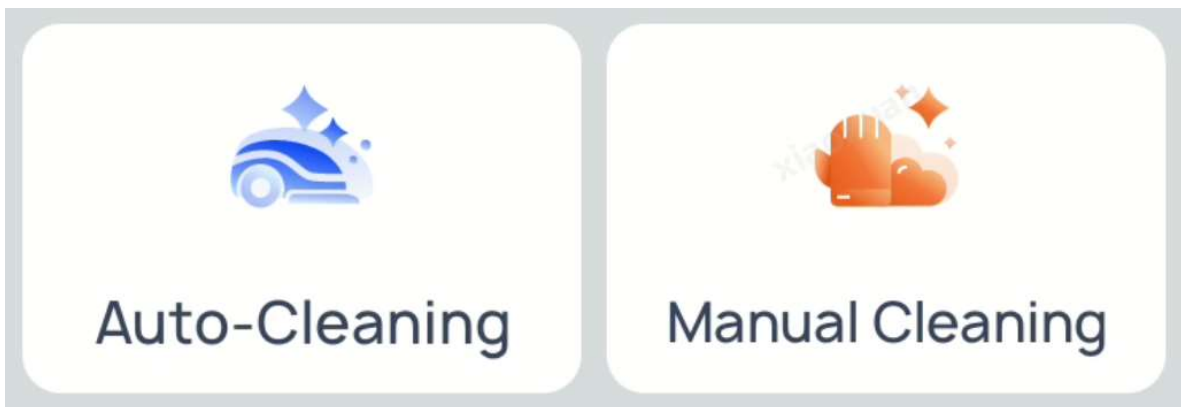
Method 2: On the home screen of the operation interface, go to "More" and click "Power Off."

Steps: 【Home Screen】 → 【More】 → 【Power Off】



### 4.1.2 Start Cleaning Task

On the robot's home screen, click "Auto Cleaning" or "Manual Cleaning" to select a cleaning task or mode and start the cleaning process.



### 4.1.3 Pause Cleaning Task

During automatic cleaning operation, tap the wake-up screen and press the Pause button to temporarily suspend robot work.



### 4.1.4 Resume Cleaning Task



To resume operation, tap the Start button on the screen. The robot will continue its pending task



### 4.2 Handrail Usage

The robot's handrail and screen are integrated and have two states: raised or lowered.

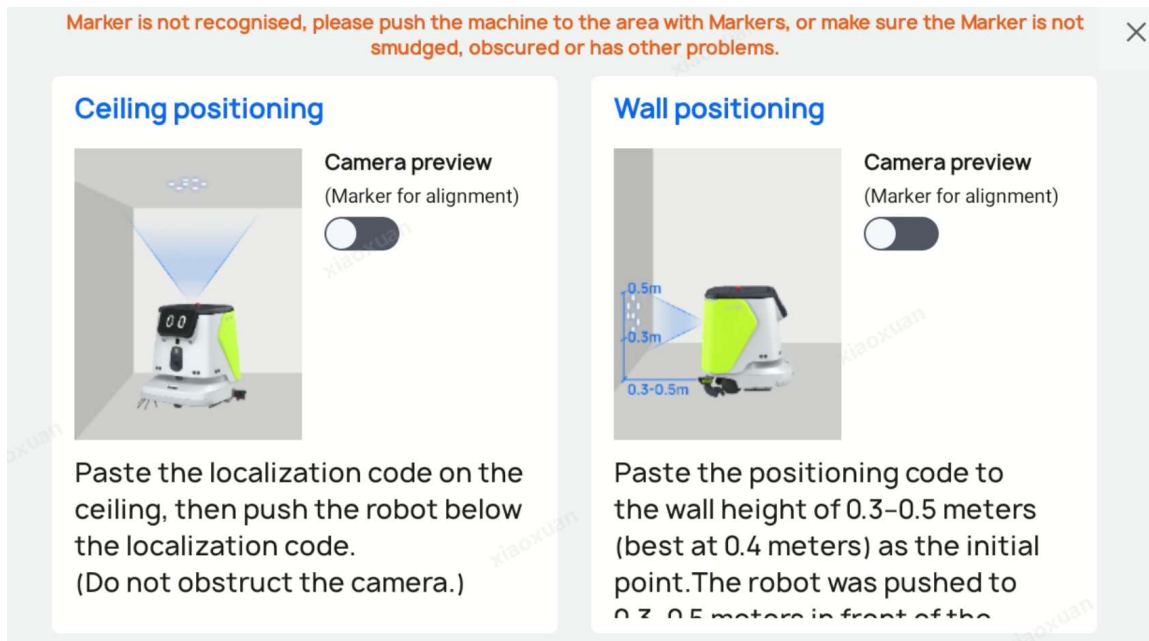
Raise the handrail and screen when you need to push the robot, perform manual cleaning, or interact with the interface. Lower the handrail and screen when the robot is idle or operating in autonomous mode.

Handrail Lowered	Handrail Raised
	

## 4.3 Work Modes

### 4.3.1 Automatic Cleaning

1、 Before starting an automatic cleaning task, ensure the robot is powered on and positioned directly beneath or in front of the visual positioning code (depending on the code's placement) to ensure the robot can successfully localize at the starting point.



2、 After clicking "Auto Cleaning" on the home screen, select the cleaning task to be executed (pre-configured by delivery personnel). If no selection is made, the default task will be executed. Click "Start Cleaning" to begin. (Note: During automatic cleaning, the screen handlebar must be lowered; otherwise, the task cannot start normally.)

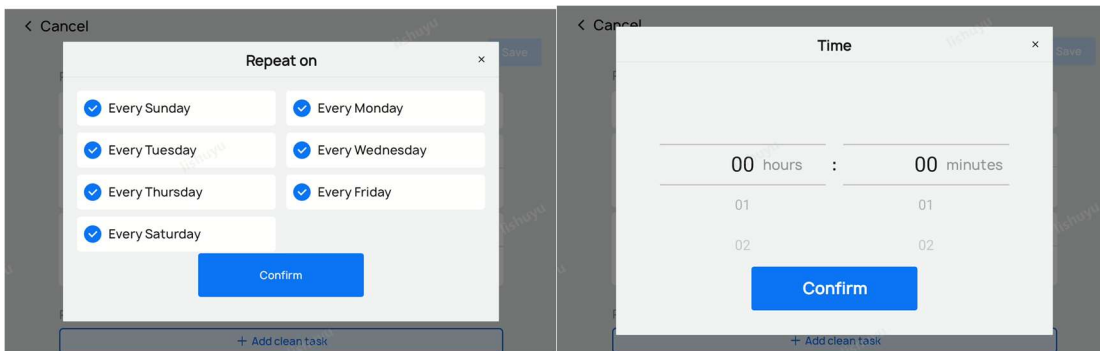
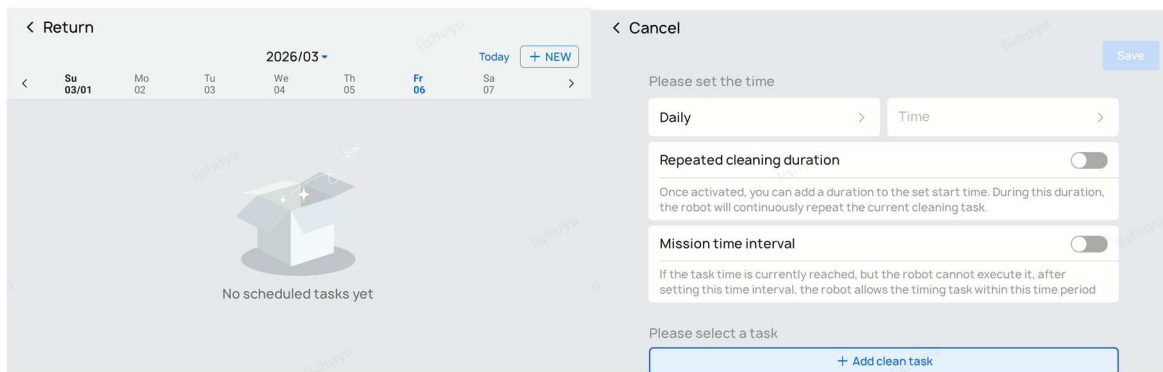
Steps: **【Home Screen】** → **【Auto Cleaning】** → **【Select Task】** → **【Start Cleaning】**



### 4.3.2 Scheduled Task

The robot supports scheduled tasks. Once a scheduled task is set, the robot will automatically execute the task at the preset time, provided that the positioning is normal and there is sufficient power and water.

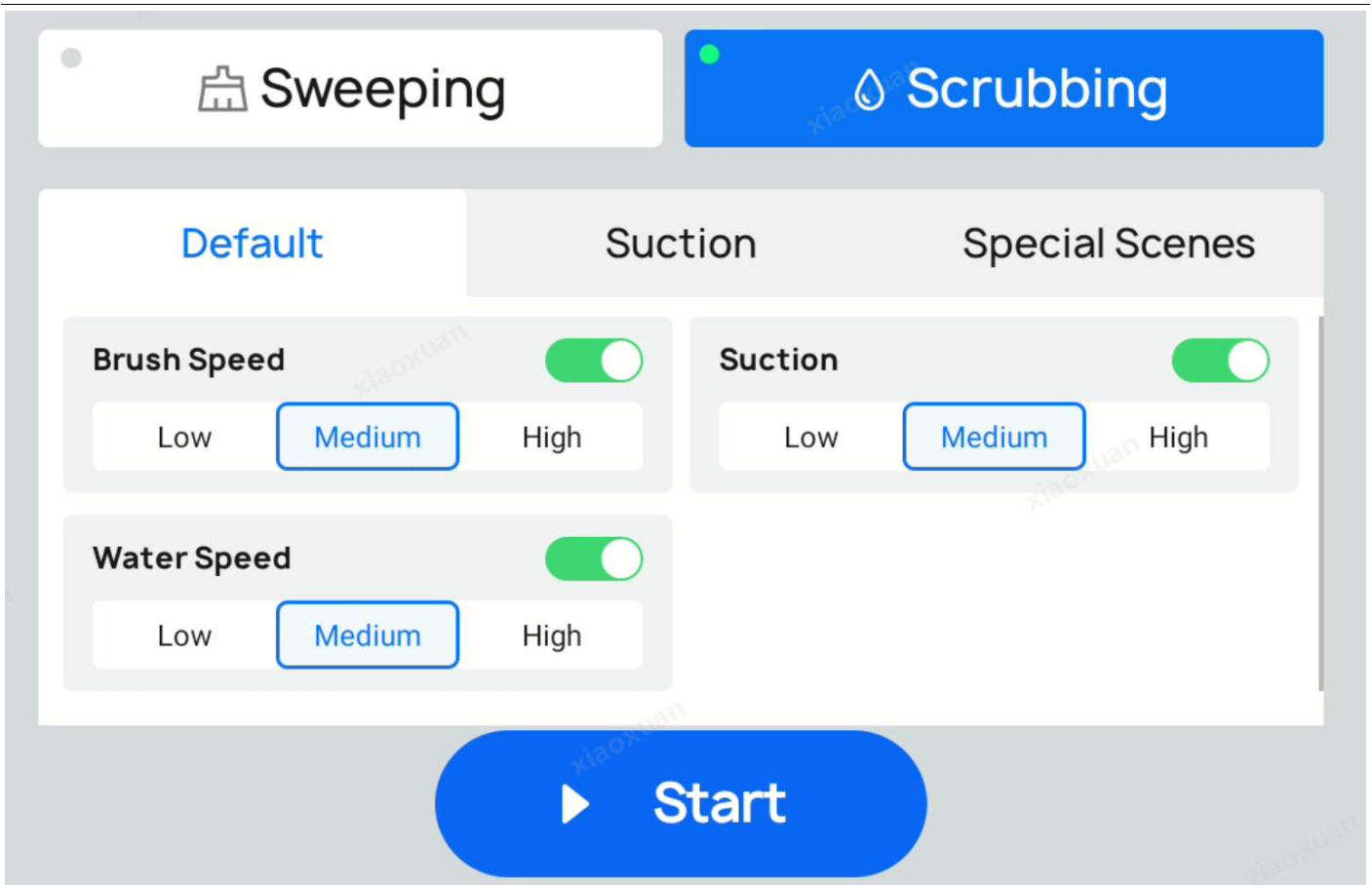
Steps: **【Home Screen】** → **【Scheduled Cleaning】** → **【Add New】** → **【Add Cleaning Task】** → **【Set Time】**



### 4.3.3 Manual Cleaning

After raising the handlebar, you can select Manual Cleaning on the home screen and choose the corresponding cleaning mode to put the robot into a cleaning state. At this point, you can push the robot to begin manual cleaning.

Steps: **【Home Screen】** → **【Manual Cleaning】**



## 4.4 Cleaning Modes

### 4.4.1 Scrubbing Mode

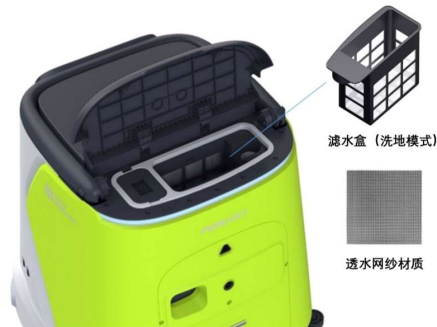
1、 When the cleaning mode for the robot's task is set to "Scrubbing," ensure that the corresponding scrubbing components have been installed. Details are as follows:

Steps	Schematic Diagram
Remove side brush	

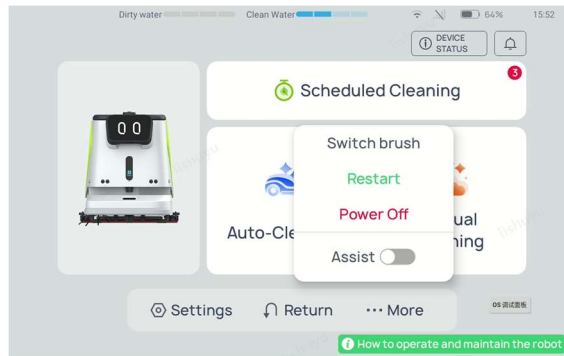
Confirm the squeegee is installed



Confirm the filter box in the dirty water tank is installed  
(Note: Do not mistakenly install the dust box)



In scrubbing mode, please install the scrubbing roller brushes  
Click "More" on the home screen, then click "Switch Roller Brush." The roller brush compartment will automatically lower to a specific height. Push the scrubbing roller brushes flat against the ground into the compartment and fasten the side latches. Click "Installation Complete," and the roller brush compartment will automatically rise.



2、The scrubbing task can start normally when the robot detects that the clean water tank has sufficient capacity and the dirty water tank is not full.



#### 4.4.2 Sweeping Mode


When the "Sweeping" cleaning mode is selected for a task, the robot enters dry cleaning mode, which features the following three cleaning methods:

- ① "Sweep + Vacuum + Mop" mode (default mode), suitable for hard floors
- ② Silent dust mopping, suitable for hard floors
- ③ Carpet vacuuming, suitable for short-pile carpets

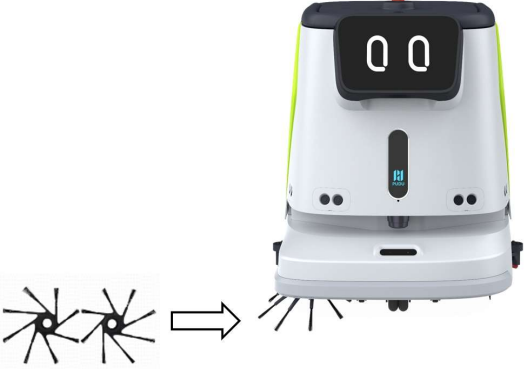

**Before cleaning, please ensure the corresponding sweeping components have been installed on the robot.**

#### 1、Carpet Vacuuming (Short-pile)

Steps	Schematic Diagram
Remove side brush	
Confirm the sweeping roller brush is installed	

<p>Confirm the dust box in the dirty water tank is installed</p>	 <p>Dust Box (Sweeping Mode)</p> <p>Non-woven Fabric</p>
<p>Install the carpet vacuuming component (Note: The carpet vacuuming component is optional)</p>	

## 2、 Silent Dust Mopping / Sweep + Vacuum + Mop

Steps	Schematic Diagram
<p>Confirm side brushes are installed</p>	
<p>Confirm the sweeping roller brush is installed</p>	

<p>Confirm the dust box in the dirty water tank is installed</p>	<p>Dust Box (Sweeping Mode)</p> <p>Non-woven Fabric</p>
<p>Confirm the dust mop vacuum rake is installed</p>	

## 4.5 Robot Renew Water

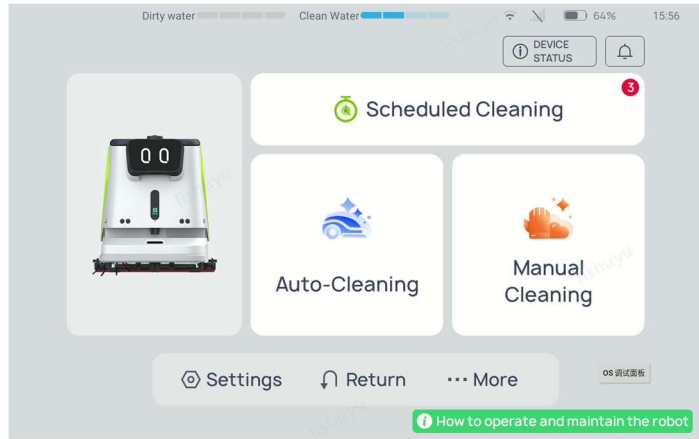
### 4.5.1 Manual Water Filling & Draining

Steps	Schematic Diagram
<p>Manual Refilling:</p> <p>Connect the water hose to a water source and insert it into the water inlet to begin refilling. The device screen will display the current clean water tank level. Stop refilling when the water level reaches over 95%.</p>	

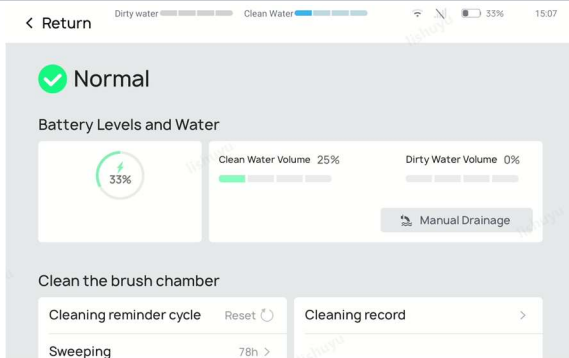
**Manual Draining:**

On the home screen, click "Device Status" in the top right corner to enter the device status page:

Steps: **【Home Screen】** → **【Device Status】** → **【Battery & Water】** → **【Manual Draining】**



On the device status page, you can check the clean water level, dirty water level, and consumable status.

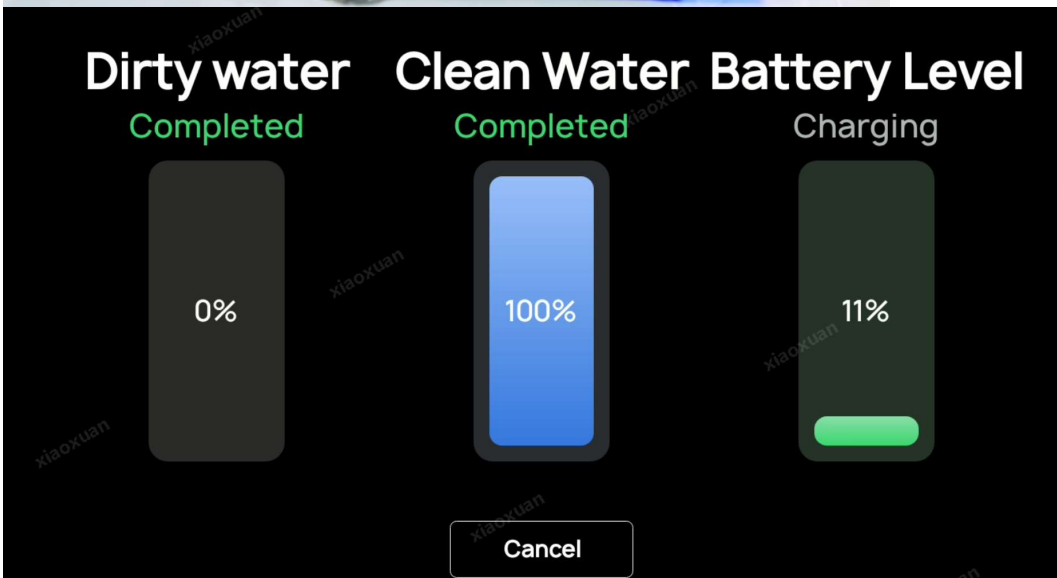


Pull out the drainage hose and place the end at a drainage point (such as a floor drain). In the manual draining section, click "Start." The drainage valve will open, and the dirty water from the tank will be discharged through the hose into the floor drain.



### 4.5.2 Auto Water Filling & Draining

The robot supports automatic refilling, draining, and charging. These features require the optional installation of a docking station, which must be deployed according to its user manual. Once deployed, the robot can achieve fully automated refilling, draining, and charging.



## 4.6 Robot Charging

CC1 supports both manual and automatic charging.

Charging Methods	
<p><b>Manual Charging</b></p> <p>Connect the robot's charging port to the charging cable. Ensure the connection is secure. If successful, the robot will prompt that it is charging.</p>	

### Automatic Charging

The robot supports automatic charging. This requires the optional installation of a workstation or charging pile, which must be deployed according to the user manual of the chosen equipment. Once deployed, the robot can achieve a fully automated recharging process.



Robot docking with charging pile

### Charing Page

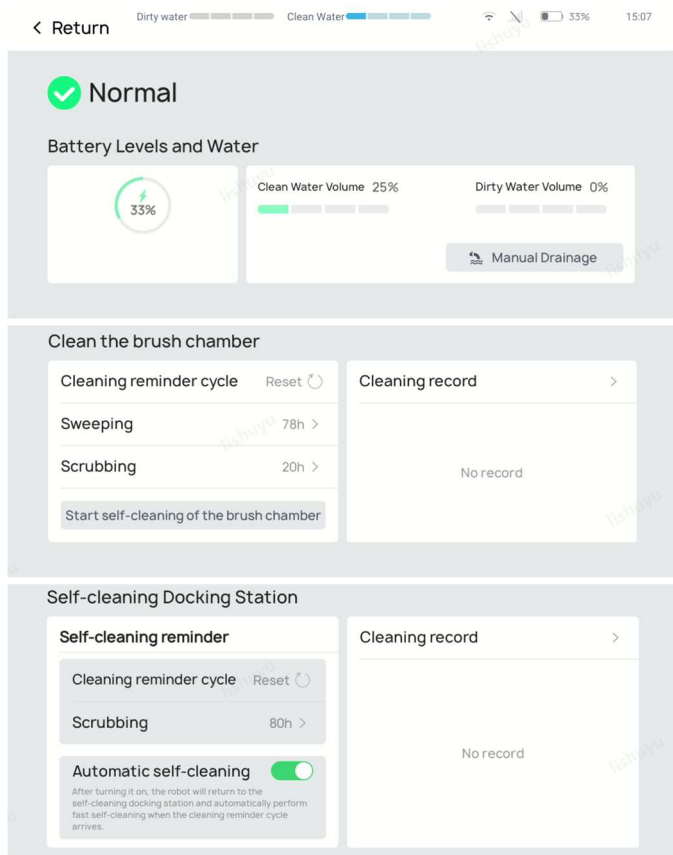


## 4.7 Device Status

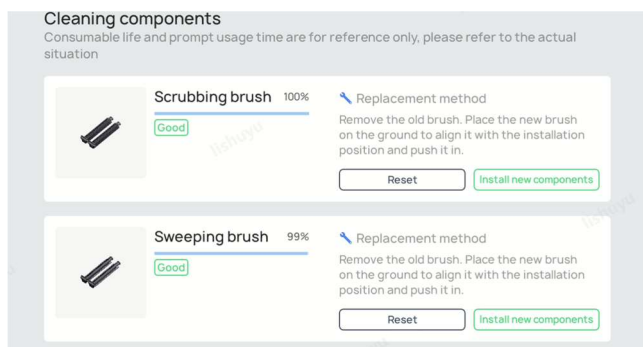
Click "Device Status" on the home screen to enter the device status page.


From this page, you can check the robot's battery level, clean water level, and dirty water level, as well as the remaining service life of the corresponding consumables.

Steps: **【Home Screen】** → **【Device Status】**



## Consumables Details Page






**Mop head adhesive strip** 99%

Good

[Replacement method](#)

Remove the dust push rake, unscrew the hand screws, remove the dust push cloth installation plate, and then use a hexagonal screwdriver to remove the dust suction chamber, pull out the old rubber strip, and push in the new rubber strip. Finally, install all components and screws as they were.

Reset
Install new components




**Squeegee-rubber strip** 100%

Good

[Replacement method](#)

Remove the water suction rake, unscrew the hand screws, and remove the inner cavity of the water suction squeegee installation strip. After removing the old rubber strip, install the new rubber strip on both sides of the inner cavity according to the hole position. Finally, reinstall the inner cavity water suction rake and tighten the hand screws.

Reset
Install new components




**Filter** 100%

Good

[Replacement method](#)

Open the sewage tank cover, remove the sewage tank cover, directly take out the filter, replace the new filter, and then install the sewage tank cover and cover as they were.

Reset
Install new components




**Dustbin** 87%

Good

[Replacement method](#)

Open the sewage tank cover, remove the sewage tank cover, directly take out the dust box, replace the new dust box, and then install the sewage tank cover and cover as they were.

Reset
Install new components




**Side Brush** 99%

Good

[Replacement method](#)

Simply press the side brush downward to disassemble. If it is an anti-drop side brush, you need to press the button at the bottom of the side brush while pressing downward. When installing, push upwards to the hole until you hear a "click" sound. If you have an anti-drop side brush, press and hold the bottom button at the same time when installing.

Reset
Install new components



**Clean water tank filter element** 100%

Good

[Replacement method](#)

After the clean water tank is emptied, unscrew the hexagonal nut on the left rear of the bottom of the robot, replace the new filter element, and reinstall the nut.

Reset
Install new components

## 4.8 Settings

Settable items include the following:

Settings Item	Description
Task Management	Create, modify, and delete cleaning tasks
Cleaning Report	View the robot's past cleaning report records
Cleaning Settings	Adjust settings for AI cleaning and collaborative cleaning between robots
Charging Settings	Select specific charging functions based on site conditions and customer requirements
Network	Connect to a network and adjust network settings
Speed	Set speeds for different cleaning modes
Voice, Lighting, and Animation	Set the robot's voice, lighting, and screen display animations during operation
Map	Map list and entry point for mapping tools
Language and Units	Switch the interface language and toggle between metric and imperial units
Password and Security	Set lock screen passwords and other measures to prevent operation by non-professional personnel
Time	Set the robot's time
Version Upgrade	Display and click to update the robot's software version
Debugging	Adjust internal robot parameters, accessible only to technical support personnel. The company assumes no responsibility for accidents caused by unauthorized operation.
Others	Other robot settings

## 4.9 Common Functions

### 4.9.1 Cleaning Task Settings

#### 01 Special Scene Cleaning Mode

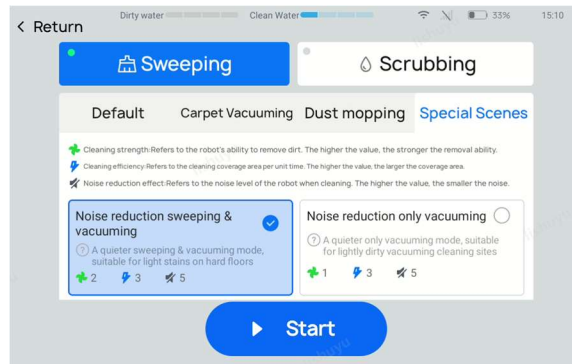
Select the appropriate preset cleaning scene based on site conditions without manually adjusting parameters. On the task editing page, click cleaning parameters, select "Sweeping" or "Scrubbing" mode, and then click "Special Scenes."

Cleaning Mode	Available Modes
---------------	-----------------

### Sweeping

Steps: **【Manual Cleaning】** → **【Sweeping】** → **【Special Scenes】**

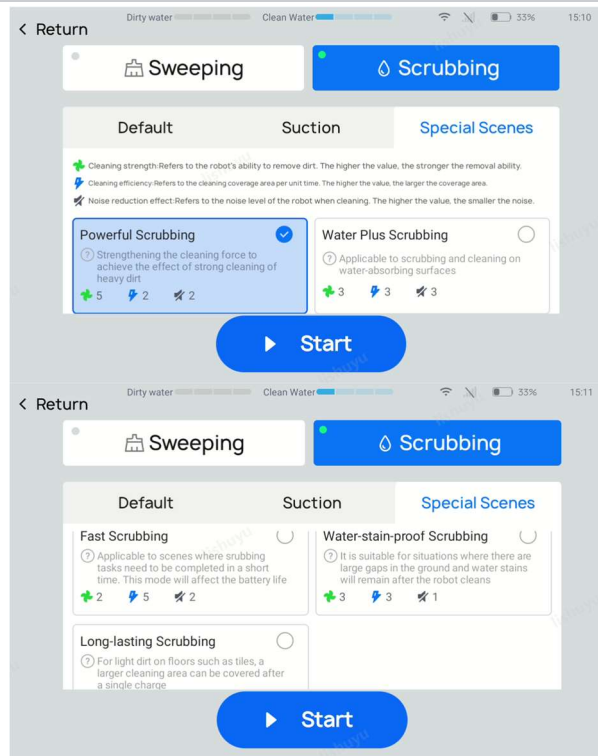
Steps: **【Auto Cleaning】** → **【Select Task】** → **【Edit】** → **【Cleaning Parameters】** → **【Sweeping】** → **【Special Scenes】**



### Scrubbing

Steps: **【Manual Cleaning】** → **【Scrubbing】** → **【Special Scenes】**

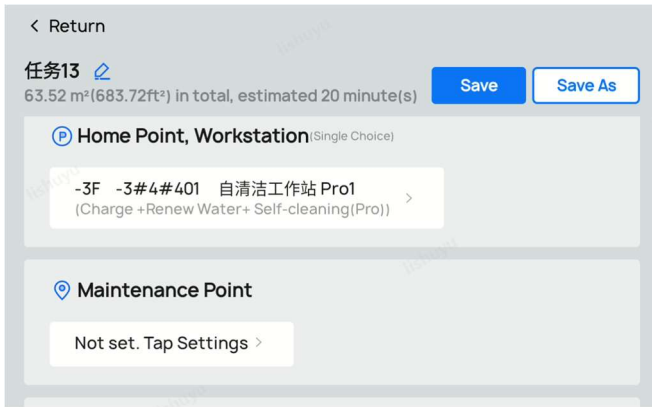
Steps: **【Auto Cleaning】** → **【Select Task】** → **【Edit】** → **【Cleaning Parameters】** → **【Scrubbing】** → **【Special Scenes】**



### 02 Select Maintenance Point

Add maintenance points during mapping and select them when editing tasks. Once set, the robot can autonomously proceed to a maintenance point to await manual assistance if it encounters errors or anomalies that prevent cleaning but still allow for normal movement.

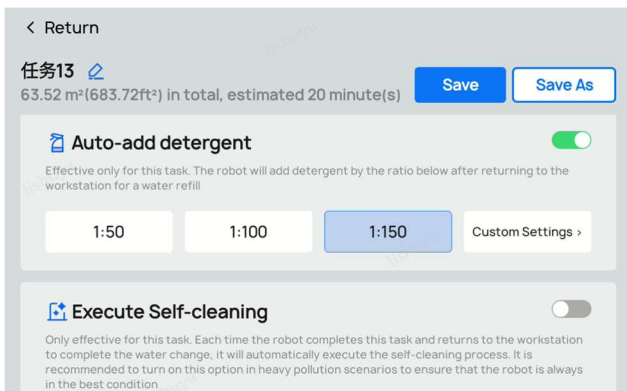
Steps: **【Auto Cleaning】** → **【Select Task】** → **【Edit】** → **【Maintenance Point】**



### 03 Detergent Settings

Use this function in conjunction with a workstation (the "Auto-add Detergent" option is available when a workstation task is selected).

Steps: **【Settings】** → **【Task Management】** → **【New】** → **【Next】** → **【Select Map Area】** → **【Cleaning Parameters】** → **【Scrubbing】** → **【Return Point/Workstation】** → **【Refill & Charge Workstation】** → **【Auto-add Detergent】**



### 04 Hibernation Period

Configure Hibernation Period on the robot by date. Scheduled tasks will not automatically start during these periods. Batch setting of sleep periods for robots under the same store is also supported via Pudulink and the Merchant Platform (ensure both are updated to the latest versions).

Steps: **【Home Screen】** → **【Settings】** → **【Time】** → **【Hibernation Period】**

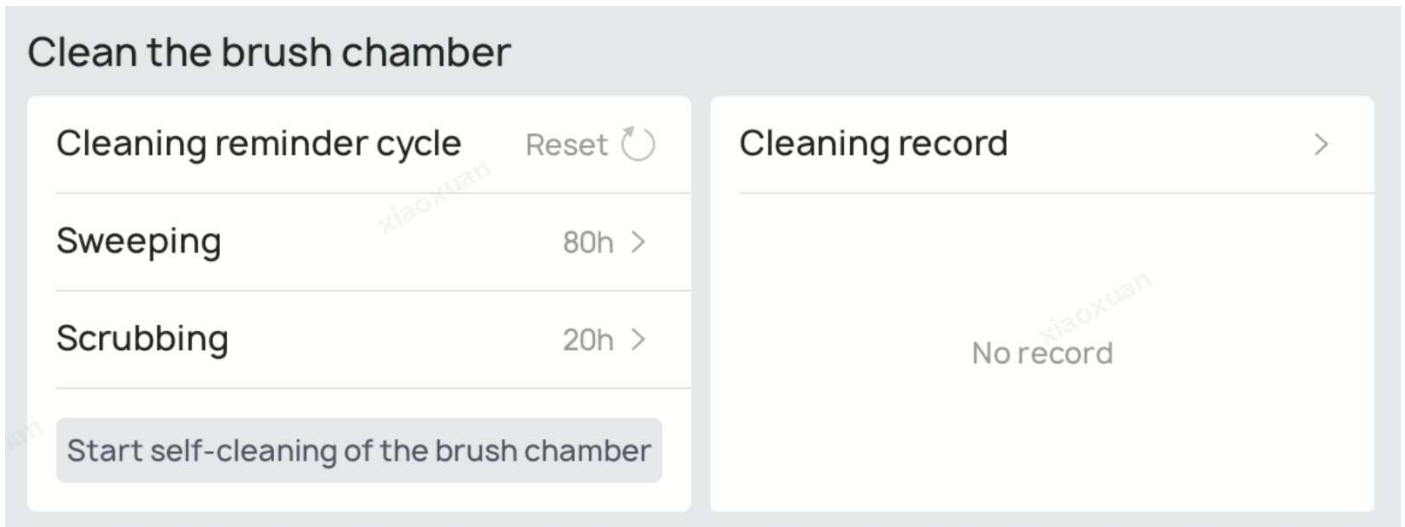


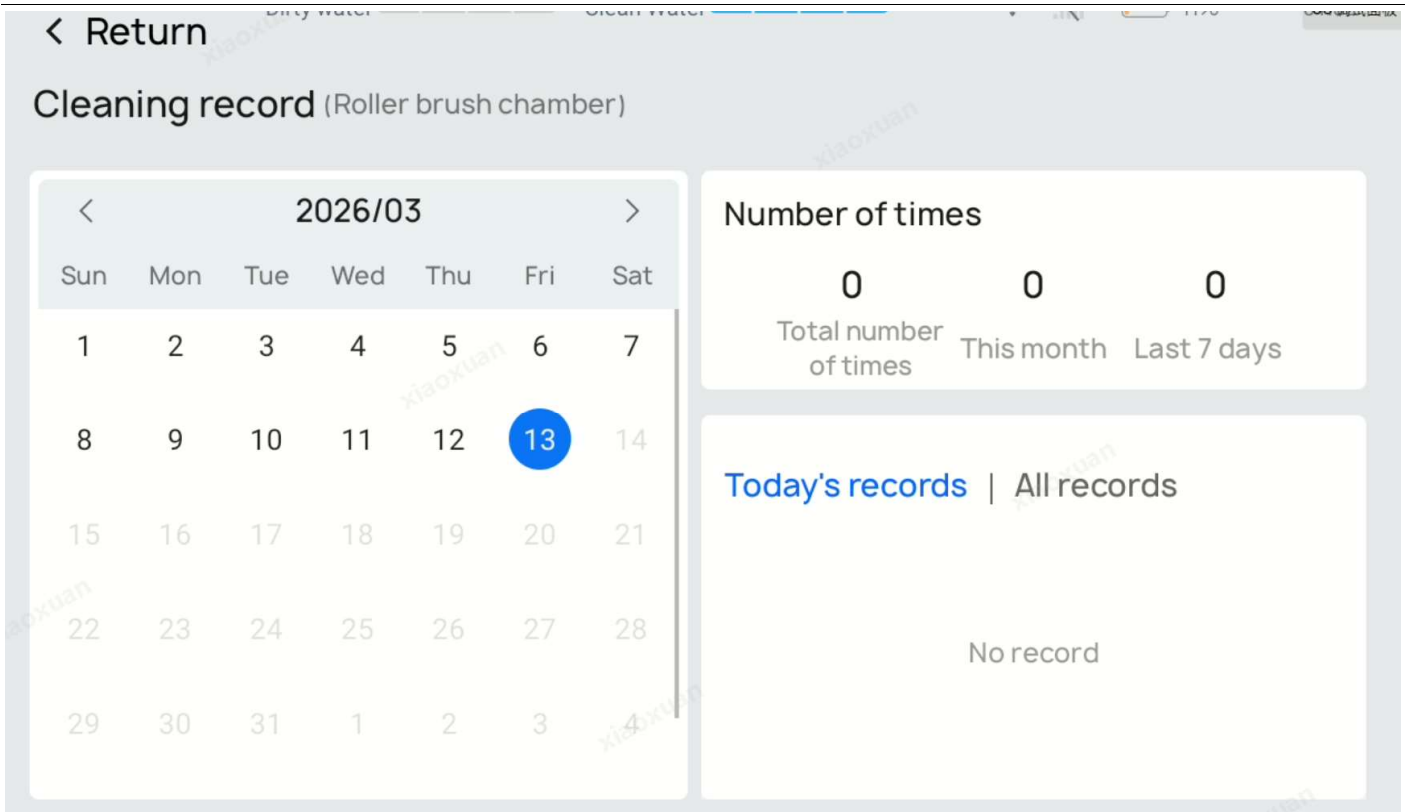
### 4.9.2 Product Maintenance Settings

#### 01 Roller Brush Chamber Self-Cleaning

Use in conjunction with the CC1 optional accessory: Roller Brush Compartment Self-Cleaning Kit. It automatically cleans accumulated dirt inside the roller brush compartment, and cleaning records can be queried on both the device and the cloud platform.

Steps: 【Home Screen】 → 【Device Status】 → 【Clean Roller Brush Compartment】



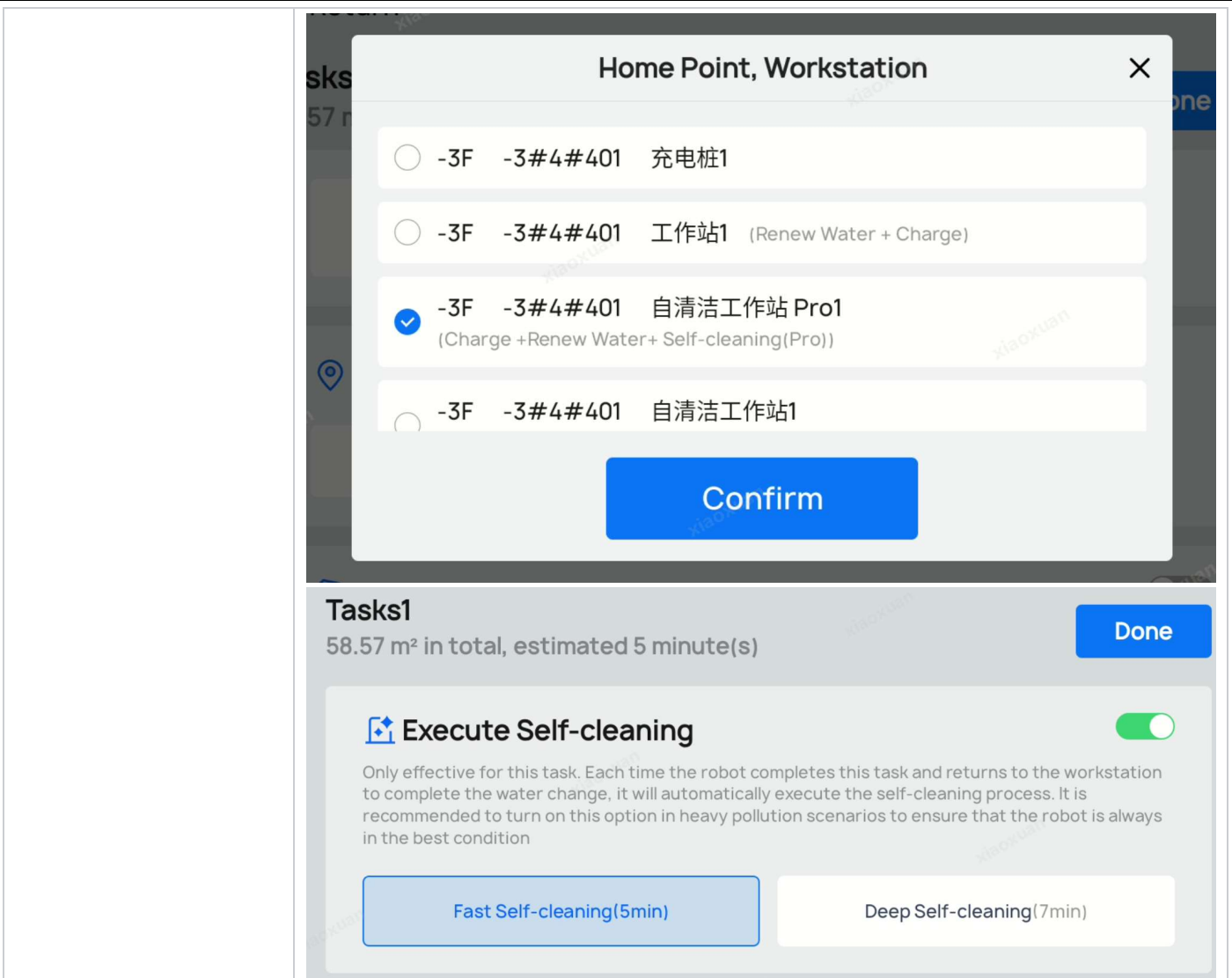


## 02 Self-Cleaning Workstation

Use in conjunction with the CC1 optional self-cleaning base station. It can fully automate the cleaning of the robot's squeegee, reducing manual maintenance.

Function	Interface Illustration
<p>Self-cleaning Records</p> <p>Steps: <b>【Home Screen】</b>  → <b>【Device Status】</b> →  <b>【Self-cleaning Workstation】</b></p>	

<p>Execute self-cleaning after the cleaning task is completed (on the condition that a task with a self-cleaning workstation is selected)</p> <p>Steps: <b>【Settings】</b> → <b>【Task Management】</b> → <b>【New】</b> → <b>【Next】</b> → <b>【Select Map Area】</b> → <b>【Cleaning Parameters】</b> → <b>【Scrubbing】</b> → <b>【Return Point/Workstation】</b> → <b>【Self-cleaning Workstation】</b> → <b>【Execute Self-cleaning】</b></p>	



### 4.9.3 Product Interaction Settings

#### 01 Multi-language Switch

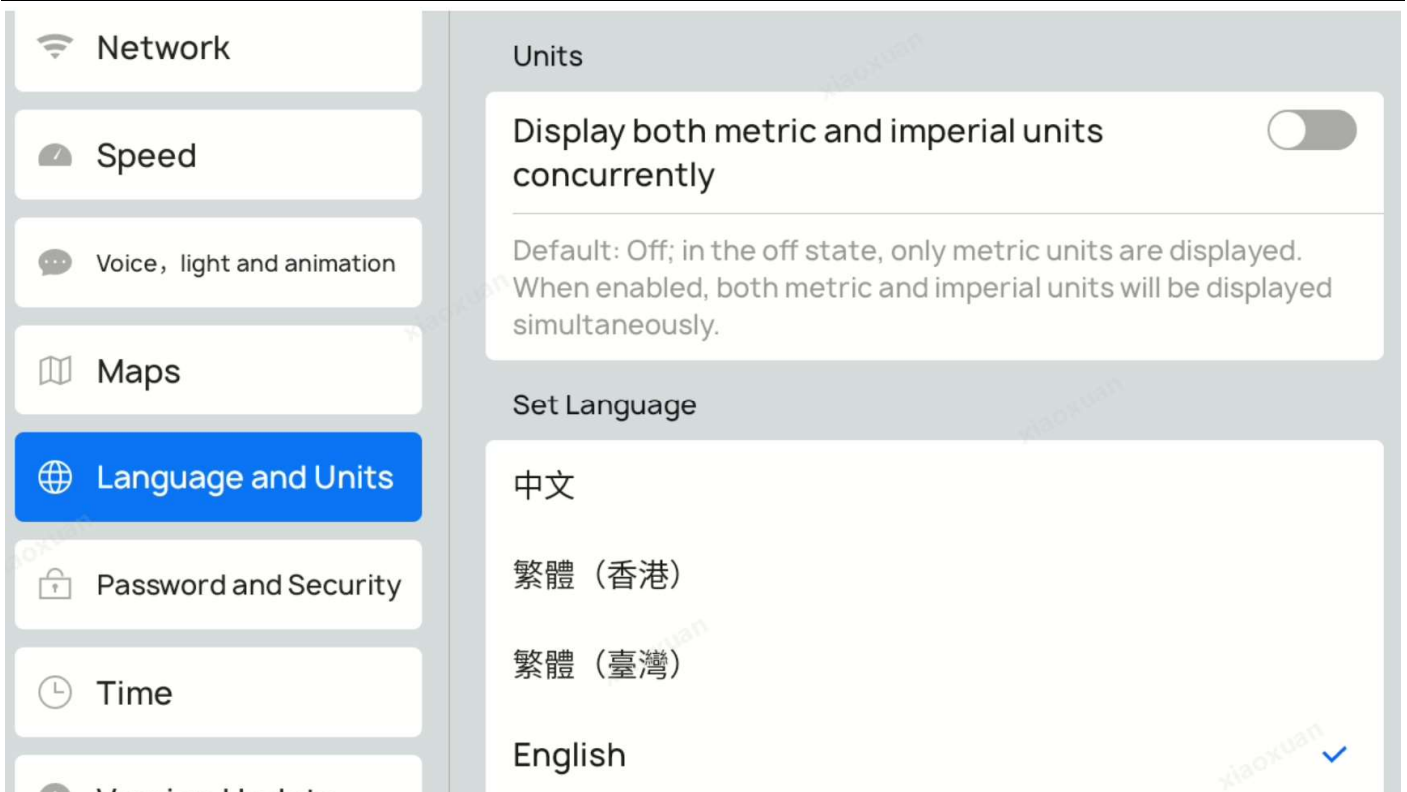
Switch the operating system language

Steps: **【Home Screen】** → **【Settings】** → **【Language and Units】** → **【Select Language】**

#### 02 Metric/Imperial Unit Switch

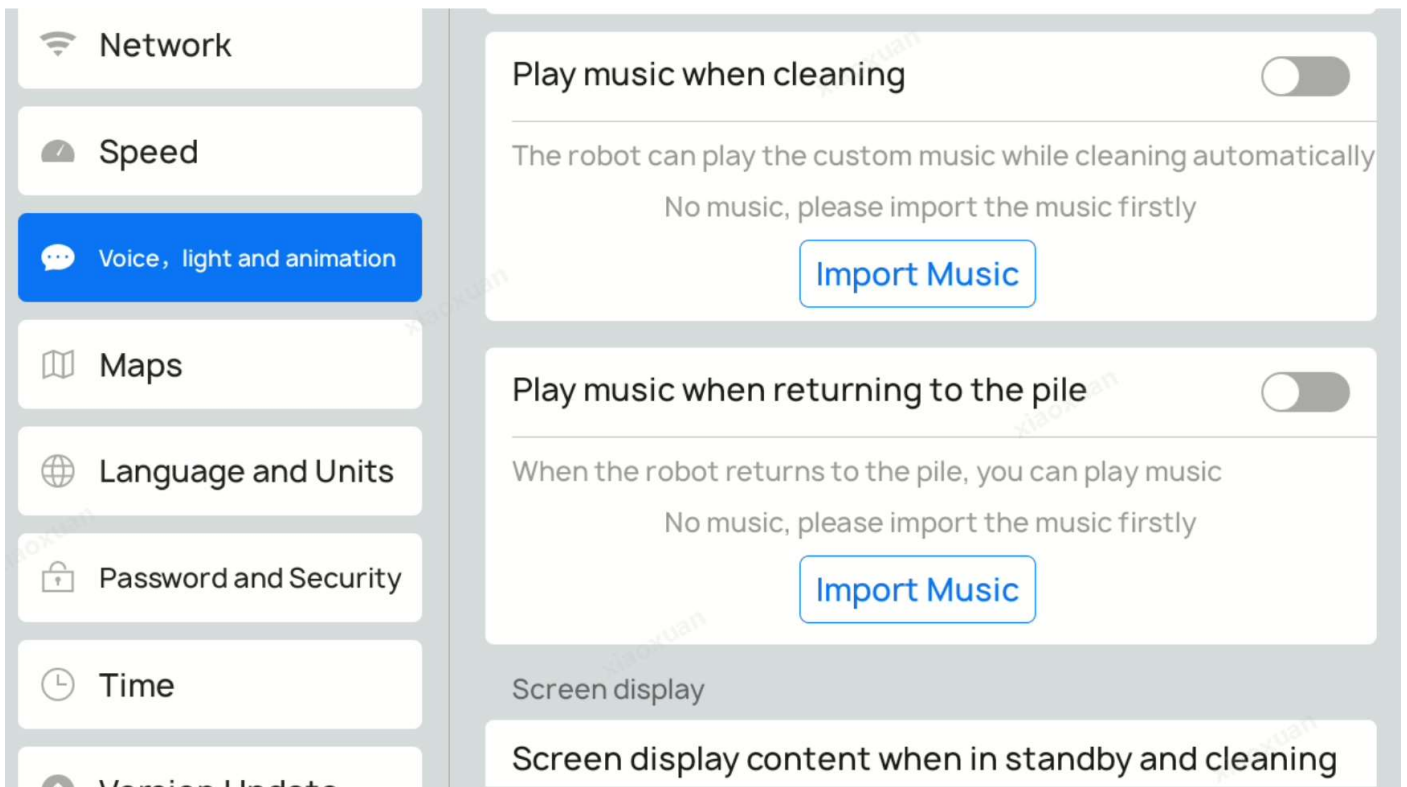
When enabled, imperial units will be displayed

Steps: **【Home Screen】** → **【Settings】** → **【Language and Units】** → **【Units】**



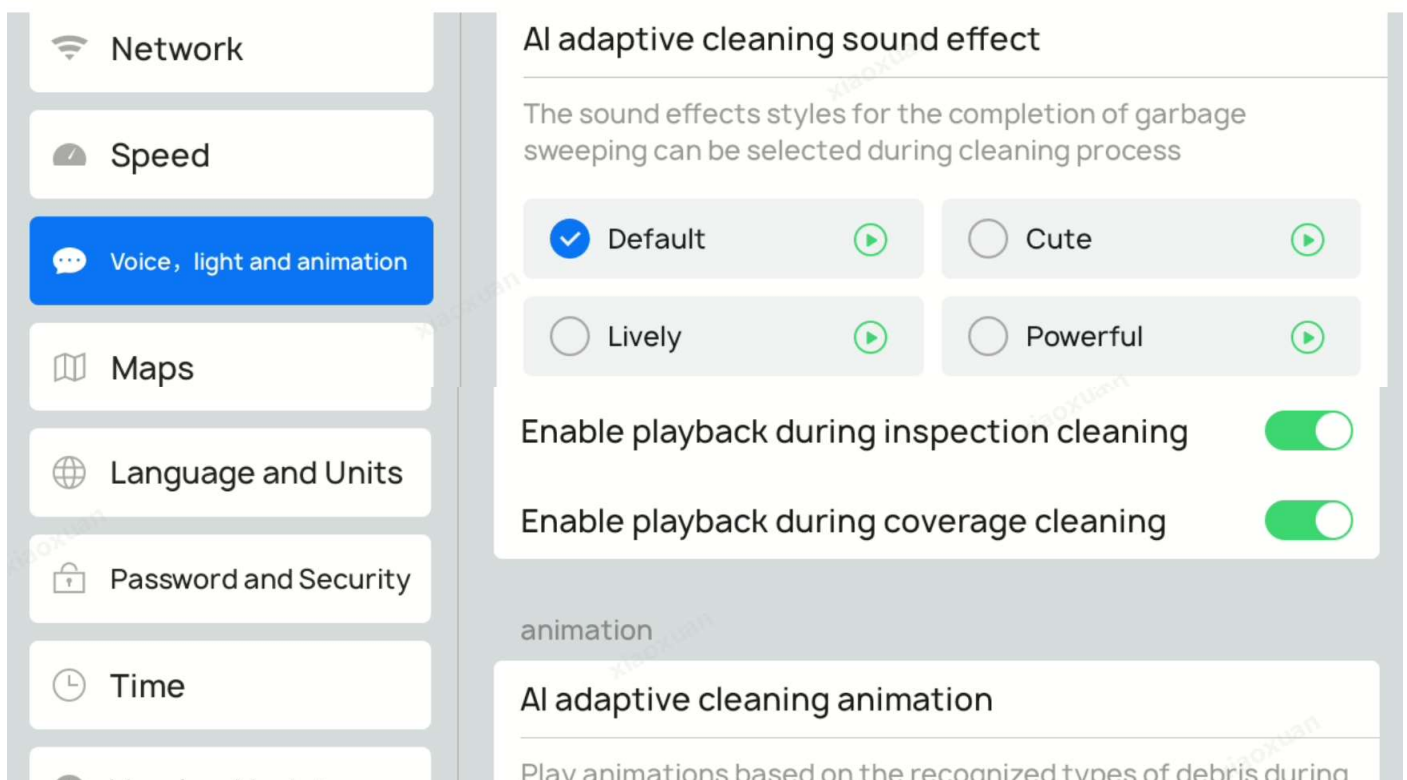
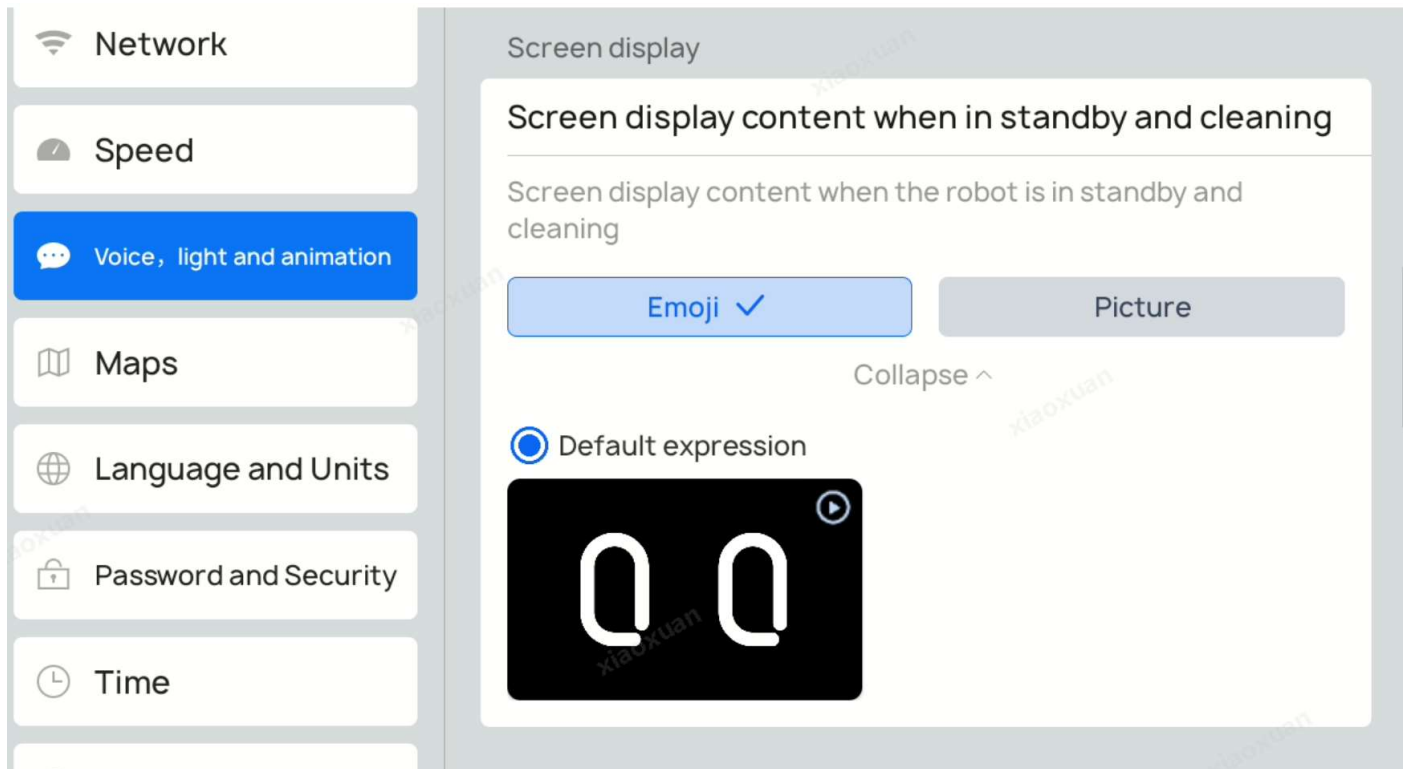
### 03 Play Voice and Music During Operation

Steps: **【Home Screen】** → **【Settings】** → **【Voice and Display】** → **【Volume, Voice/Music】**



### 04 Replace Expressions with Custom Images During Operation

Steps: **【Home Screen】** → **【Settings】** → **【Voice and Display】** → **【Screen Display】**



### 05 Screen Accidental Touch Prevention

Set the standby screen wake-up mode to prevent frequent accidental touches in high-traffic or water-splash environments such as malls, supermarkets, complexes, and swimming pools, which can reduce the cleaning efficiency of the CC1 series.

Steps: **【Home Screen】** → **【Settings】** → **【Password and Security】** → **【Screen Wake-up Mode During Cleaning Task】**

### Screen wake-up mode during cleaning tasks

**Single-click wake-up**  
Default is single-click wake-up


**Double-click wake-up**  
Applicable to scenes with high traffic such as shopping malls and complexes to prevent accidental touches that affect the robot's cleaning efficiency. It is also suitable for scenes such as swimming pools and gyms where splashing water may cause accidental touches on the screen.

## 5、Product Maintenance & Troubleshooting

### 5.1 Daily Cleaning

#### 5.1.1 Cleaning Sensors and the Underside of the Robot

Sensors act as the robot's eyes; if they are obscured by dust, the robot will clean blindly. Therefore, regular cleaning is required.

Cleaning Method	Wipe with a soft, clean cloth
Frequency	Every 3-5 weeks
Sensor Cleaning Illustration	

#### 5.1.2 Cleaning Dust Bin, Water Filter Tank, Trash Container & Filter Sponge

The accumulation of trash and dust can lead to bacterial growth and affect cleaning performance; please clean them in a timely manner.

Cleaning Method	<ol style="list-style-type: none"> <li>1. Trash Box: Use a brush to clean out trash.</li> <li>2. Filter Sponge: Gently tap for routine cleaning; replace directly if heavily soiled. Washing is not recommended. Water Filter Box: Can be rinsed with water.</li> <li>3. Dust Box: Empty the dust and tap gently. Do not rinse with water; keep dry.</li> </ol>
Frequency	Clean every 2 days, or once to multiple times daily depending on the level of dirt.

Cleaning  
Illustration



Trash Box



Filter Sponge




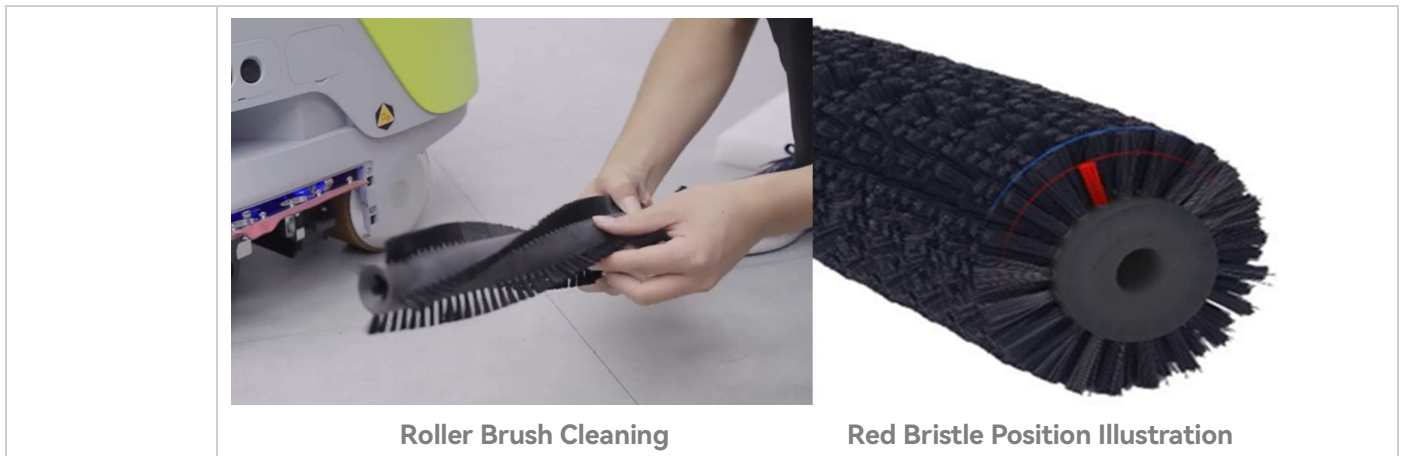
Filter Bos



### 5.1.3 Cleaning Side Brush & Sweeping/Scrubbing Roller Brushes


During operation, hair and fine fabrics can become tangled around the side brushes and roller brushes. Failure to clean them for long periods will affect cleaning performance and may even shorten the motor's lifespan.

<p>Cleaning Method</p>	<p>Use a brush to clean the sweeping/scrubbing roller brush and remove any entanglements. (*When the height of the roller brush bristles is lower than that of the red bristles (as shown below), the roller brush needs to be replaced.)</p>
<p>Frequency</p>	<p>Clean every 2 days, or once to multiple times daily depending on the level of dirt.</p>
<p>Cleaning Illustration</p>	 <p style="text-align: center;">Side Brush Cleaning</p>



### 5.1.4 Cleaning or Replacing Mop Cloth & Squeegee

Too much dirt on the dust mop rake will affect the dust mopping performance, and a dirty squeegee will affect the scrubbing performance.


<p>Cleaning Method</p>	<ol style="list-style-type: none"> <li>1. Dust Mop Cloth: Unscrew the knobs and remove the dust mop cloth for washing or direct replacement.</li> <li>2. Squeegee: Rinse with water and wipe with a cloth.</li> </ol>
<p>Frequency</p>	<ol style="list-style-type: none"> <li>1. Dust Mop Cloth: Based on the level of dirt, perform a simple cleaning or remove for washing/replacement.</li> <li>2. Squeegee: Clean every 2-3 days, or daily depending on the level of dirt.</li> </ol>
<p>Cleaning Illustration</p>	 <p style="text-align: center; margin-top: 10px;">Dust Mop Cloth Cleaning</p>



Squeegee Cleaning

### 5.1.5 Cleaning the Dirty Water Tank

Long-term accumulation of dirt in the dirty water tank will produce foul odors and can easily lead to clogging of the drainage valve.


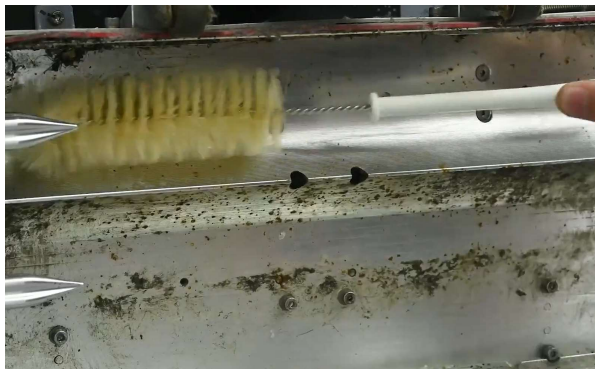
<p>Cleaning Method</p>	<p>Open the drainage valve (drainage switch) to empty the wastewater, then rinse with a water hose and use a brush to scrub the dirty water tank.</p>
<p>Frequency</p>	<p>Clean once daily or every other day (if an automated water refill and drainage workstation is deployed, the interior walls of the dirty water tank can be cleaned 1–2 times per week as needed).</p>
<p>Cleaning Illustration</p>	 <p>Drainage</p>



Dirty Water Tank Cleaning

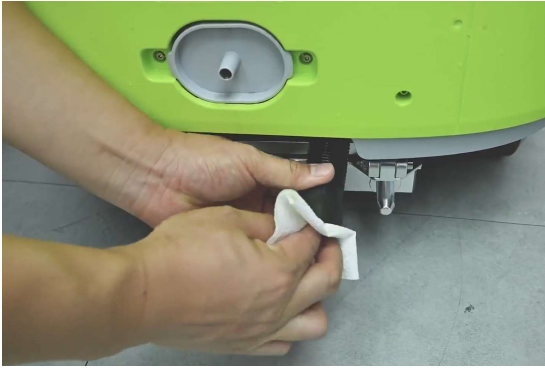

### 5.1.6 Cleaning the Roller Brush Chamber

Long-term accumulation of sludge and dirt in the roller brush tray will affect drainage and the overall effectiveness of the scrubbing and cleaning process.

<p>Cleaning Method</p>	<p>After draining both the clean and dirty water tanks, tilt the robot backward. Use a wire brush to clean the small holes in the roller brush compartment and a soft brush to clean the compartment itself. Wipe dry with a towel after cleaning.</p>
<p>Frequency</p>	<p>It is recommended to clean every 2-3 weeks.</p>
<p>Cleaning Illustration</p>	<div style="text-align: center;">  <p>Roller Brush Chamber Drainage Position</p>  <p>Cleaning the Roller Brush Chamber</p> </div>

### 5.1.7 Cleaning the Pollution Pipe



Clogged suction pipes will result in a loss of suction, preventing the robot from properly absorbing water in scrubbing mode. Suction air ducts are typically clogged by a combination of lint and dust.

Cleaning Method	Rinse by pouring water into the dirty water tank's discharge port to flush out dirt from the suction pipe. Wipe dry with a towel after cleaning.
Frequency	Rinse once a week.
Cleaning Illustration	 <p style="text-align: center;"><b>Suction Pipe</b></p>
	 <p style="text-align: center;"><b>Inlet Port Rinsing</b></p>

### 5.1.8 Cleaning charging plates

Dust or dirt on the charging contacts of the robot or workstation/charging station can prevent the robot from charging automatically, requiring regular inspection and cleaning.

Cleaning	Wipe with a soft, clean cloth.
----------	--------------------------------

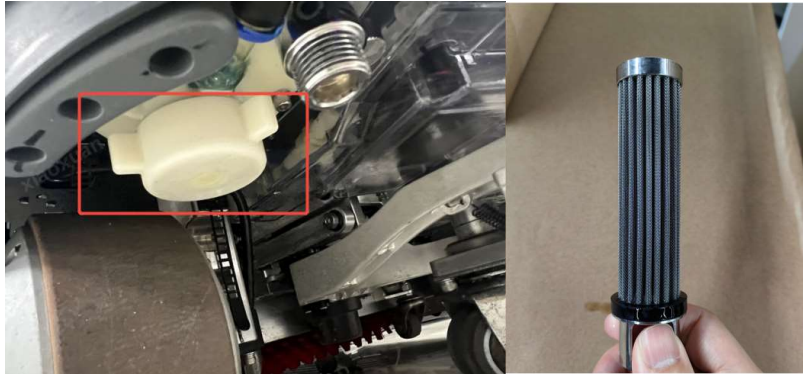
Method	
Frequency	3-5 weeks
Cleaning Illustration	 <p style="text-align: center;"><b>Robot charging plates</b></p>
	 <p style="text-align: center;"><b>Docking station/charging pile plates</b></p>

### 5.1.9 Clean the water tank filter

A clogged clean water tank filter will prevent the robot vacuum from dispensing water properly during the floor cleaning mode. Clogged clean water tank filters are typically caused by debris and limescale buildup from water pipes.

Cleaning Method	Unscrew the filter cartridge cover in the clean water tank, remove the filter cartridge, and rinse it. After rinsing out the dirt from the filter cartridge, reinstall the filter cartridge and cover.
Frequency	3-5 weeks

Cleaning  
Illustration



Clear water tank filter

## 5.2 Consumable Replacement

Consumables	Replacement Instructions
Side Brush Replacement	Side brushes are consumable parts. If wear is detected and the bristles cannot unfold properly for operation, replacement should be considered.
Dual Roller Brushes	Check the roller brush bristles; if the remaining bristle height reaches the specific indicator level (as shown below), they must be replaced.
Squeegee Rubber Blades	The squeegee rubber strips (front and rear) are consumable parts. High-wear environments: Recommended replacement every 1 month. Medium-wear environments: Recommended replacement every 2 months. Low-wear environments: Recommended replacement every 3 months.
Dust Mop Rake Rubber Blades	The dust mop rake rubber strips (front and rear) are consumable parts. High-wear environments: Recommended replacement every 1 month. Medium-wear environments: Recommended replacement every 2 months. Low-wear environments: Recommended replacement every 3 months.
Dust Mop Cloth	The dust mop cloth is a consumable part and requires cleaning during daily use; specific replacement depends on the actual dust conditions of the environment.
Dust Box Filter	The dust box filter is a consumable. If vacuuming performance is affected after long-term use and cannot be restored after cleaning, it must be replaced. The specific replacement timing depends on the actual dust conditions of the environment.

(The replacement timing for the aforementioned consumables can be determined by referring to the "Consumables" status page on the robot's status screen.)

### 5.3 Troubleshooting

Faults	Troubleshooting Steps
Unable to Power On	<ol style="list-style-type: none"> <li>1. Confirm whether the key switch is in the "On" position.</li> <li>2. Check if the robot's battery is too low; use the power adapter to charge the robot.</li> <li>3. If the power adapter fails to charge, the battery may be completely depleted (if left unused for over 30 days). In this case, remove the battery and use the direct charging cable to charge it.</li> </ol>
Debris Not Being Swept In	<ol style="list-style-type: none"> <li>1. Check if the trash box is full. If it is, pull out the trash box and empty the debris before continuing operation.</li> <li>2. Check the roller brush bristles for wear. If significant wear is confirmed, the roller brush assembly must be replaced.</li> </ol>
Significant Wastewater Left on the Floor; Unable to Suction into Dirty Water Tank	<ol style="list-style-type: none"> <li>1. Confirm that the dirty water tank lid is correctly installed.</li> <li>2. Remove the squeegee and check if the suction pipe has suction and whether the wastewater pipe is clogged. If clogged, clear the blockage before use.</li> </ol>
Unable to Drain Wastewater	<p>Check if the squeegee rubber blades are worn. If they are, please replace the rubber blades.</p>

## After-Sales Policy

Shenzhen Pudu Technology Co., Ltd. promises to provide free product warranty services starting from the date of product activation within the valid warranty period (warranty periods may vary for different components), and customers are not required to pay after-sales service fees. For cases exceeding the warranty period or not falling under the free warranty service, fees will be charged according to standard prices. Customers should contact the official after-sales service hotline to arrange repairs.

Pudu Technology will provide warranty service if the following conditions are met::

1、 Within the product warranty period:

- 1) Non-human quality issues occur under normal use.
- 2) No unauthorized disassembly or repair; no water or foreign object ingress; no collision or drop.
- 3) The product serial number, factory labels, and other markings show no signs of tearing or tampering.
- 4) Valid proof of purchase, receipts, and order numbers are provided.
- 5) Damaged spare parts replaced during the warranty period belong to Pudu Technology.

2、 Pudu Technology will charge for repairs in any of the following situations:

- 1) The product exceeds the warranty period.
- 2) The product serial number, factory labels, or other markings are torn, tampered with, or unrecognizable.
- 3) Quality issues caused by collisions or burning not resulting from the product's own quality, or ingress of foreign objects (water, oil, sand, etc.).
- 4) Damage caused by unauthorized modification, disassembly, opening of the shell, or repairs not guided by official instructions.
- 5) Damage caused by incorrect installation, use, charging, or storage not in accordance with the product manual and installation guide.
- 6) Damage caused by using cleaning detergents not specified in official instructions.
- 7) Failure of accessories or components other than the main warranty parts.
- 8) Faults or damage caused by force majeure (such as earthquakes, fires, or wars).

After-sales Service Consultation:

If you have any questions, please contact Pudu Technology Headquarters:

Official After-sales Email: [techservice@pudutech.com](mailto:techservice@pudutech.com)

Official After-sales Hotline: 400-0826-660